

OF ROAD CURVE TABLE

Table with columns R, A, T, CH and rows 1-25 containing numerical data for road curve calculations.

A PLAT OF

River Ridge

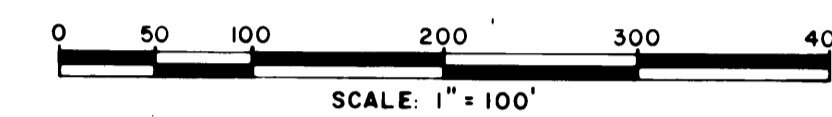
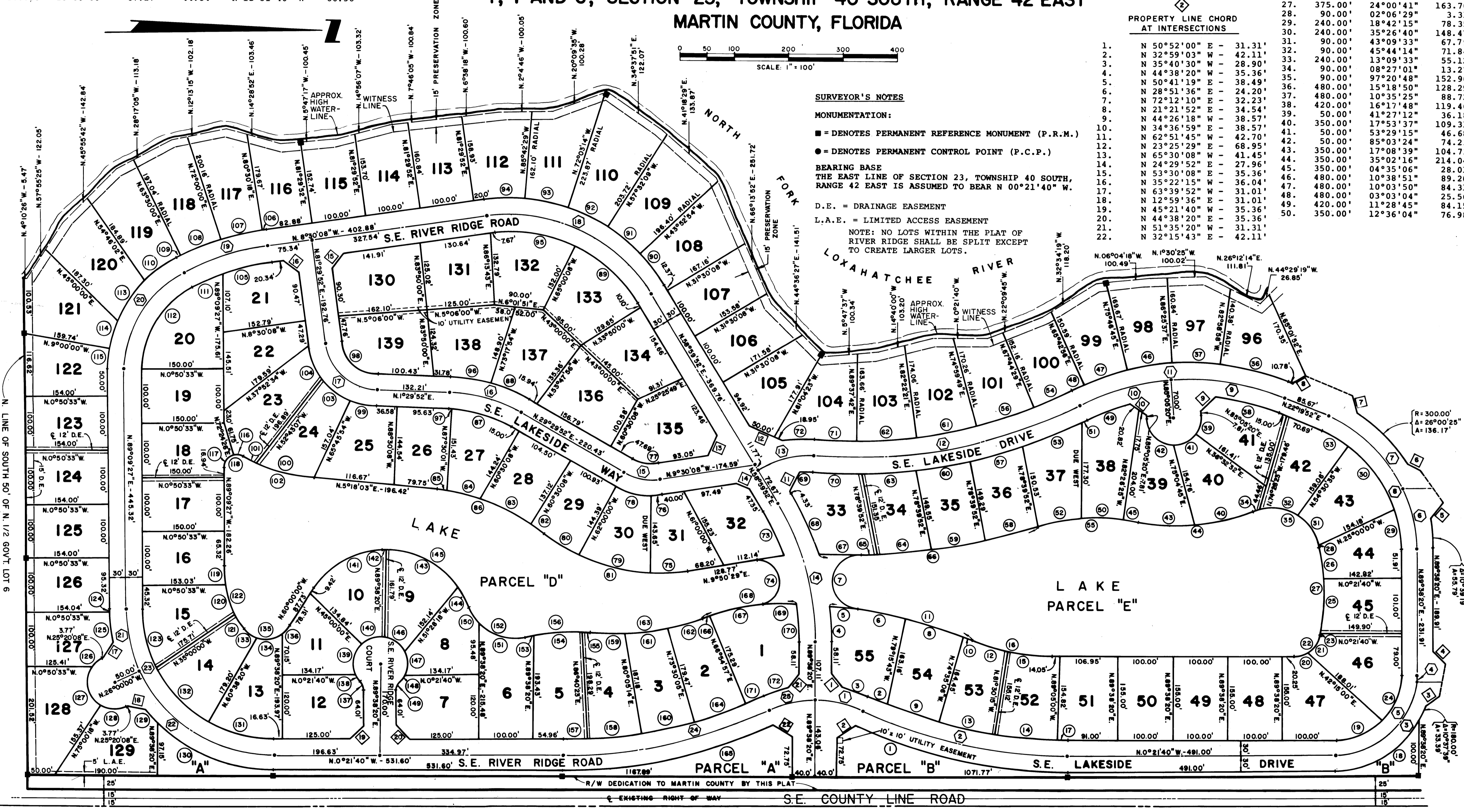
A RESIDENTIAL SUBDIVISION IN GOVERNMENT LOTS 1, 4 AND 6, SECTION 23, TOWNSHIP 40 SOUTH, RANGE 42 EAST MARTIN COUNTY, FLORIDA

JAN. 1980

PROPERTY LINE CURVE TABLE

Table with columns R, A and rows 1-138 containing numerical data for property line curve calculations.

I, LOUISE V. ISAACS, COUNTY CLERK OF MARTIN COUNTY, FLORIDA, HEREBY CERTIFY THAT THIS PLAT HAS BEEN EXAMINED AND THAT IT COMPLIES IN FORM WITH ALL THE REQUIREMENTS OF THE STATUTES OF FLORIDA PERTAINING TO MAPS AND PLATS, AND THAT THIS PLAT HAS BEEN FILED FOR RECORD IN PLAT BOOK...



SURVEYOR'S NOTES: MONUMENTATION: DENOTES PERMANENT REFERENCE MONUMENT (P.R.M.), DENOTES PERMANENT CONTROL POINT (P.C.P.), BEARING BASE, D.E. = DRAINAGE EASEMENT, L.A.E. = LIMITED ACCESS EASEMENT.

PROPERTY LINE CHORD AT INTERSECTIONS

Table with columns R, A and rows 1-22 containing numerical data for property line chords at intersections.

SHEET 2 OF 2

NOTE: IN ADDITION TO EASEMENTS SHOWN ON PLAT THERE IS A 10' UTILITY EASEMENT CONTIGUOUS TO ROAD RIGHT OF WAY LINE ACROSS ALL LOTS.

Table with columns R, A and rows 167-172 containing numerical data for easements and other measurements.